

CalFresh Expansion for SSI/SSP Recipients





CalFresh Food Assistance

- CalFresh provides monthly food benefits for people with low-income (known nationally as SNAP)
- Benefits are issued via EBT card
- Use benefits at grocery stores, farmers markets, and select restaurants
- Average household monthly benefit in San Francisco: \$210





Who is Eligible?

Who is Eligible to Apply?

- Any household or individual in San Francisco with low or no income who is within the income eligibility limits
- SSI/SSP recipients starting June 2019
- Legal permanent residents and qualified immigrants

CalFresh Benefit Amounts

- \$15 - \$192 each month
- Based on household size, income, and expenses
- Benefits roll over month to month



CalFresh/EBT Card Perks

- Hot meals at participating restaurants
- Up to \$10 in free fresh produce at farmers markets
- Free and discounted admission to local museums
- MUNI passes





New Policy

- Effective June 2019, older adults and people with disabilities receiving SSI/SSP are eligible for CalFresh
- There is NO change or reduction to SSI/SSP benefits
- Significant strengthening of the social safety net at a time when one in three older adults in SF struggle with food insecurity



San Francisco Chronicle

LOCAL // BAY AREA & STATE

CalFresh expansion could boost healthy food options for tens of thousands in SF

CalFresh Expansion Could Help 41,000 Low Income Residents in SF

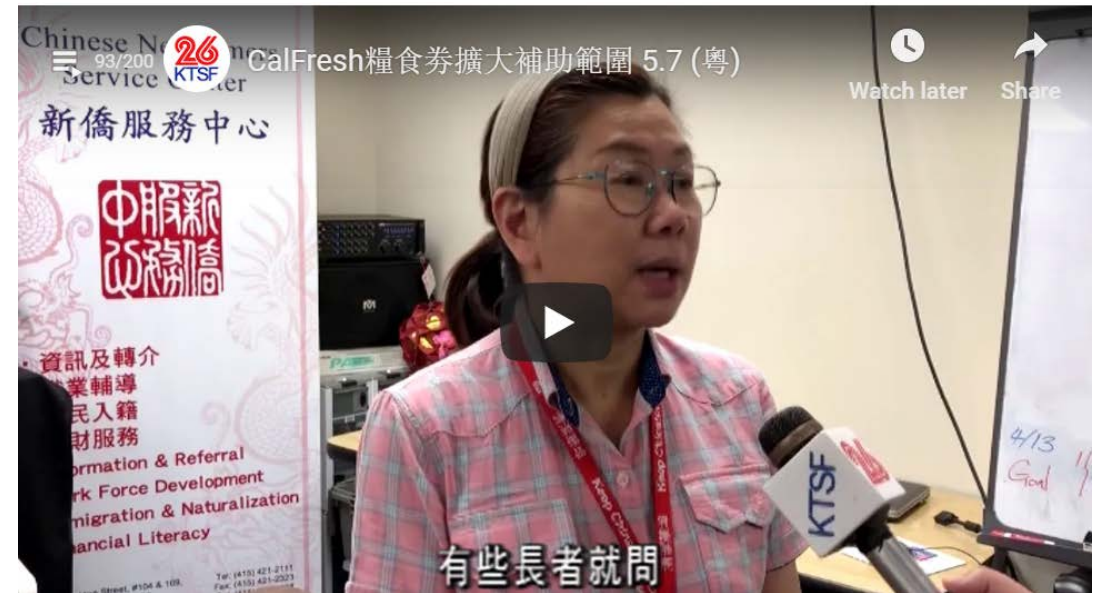


KCBS RADIO: ON-DEMAND
WEDNESDAY, MAY 1ST

A state program to help low-income residents buy healthy food is expanding. KCBS Radio's Carrie Hodousek says seniors and people with disabilities will have access to CalFresh beginning June 1.



CalFresh food 券 expansion subsidy range SSI can also apply





History

- California was the only state that did not allow SSI recipients to receive CalFresh
- Assembly Bill 1811 reversed the longstanding “cash out” policy
- Big thanks to the hard work of food and nutrition advocates for making this happen!





Who Will Benefit

- **Supplemental Security Income (SSI):** Federal program that provides cash assistance to financially eligible people who are 65 or older, blind, or disabled
- **State Supplementary Payment (SSP):** California's supplemental payment to SSI recipients to help offset the state's high cost of living





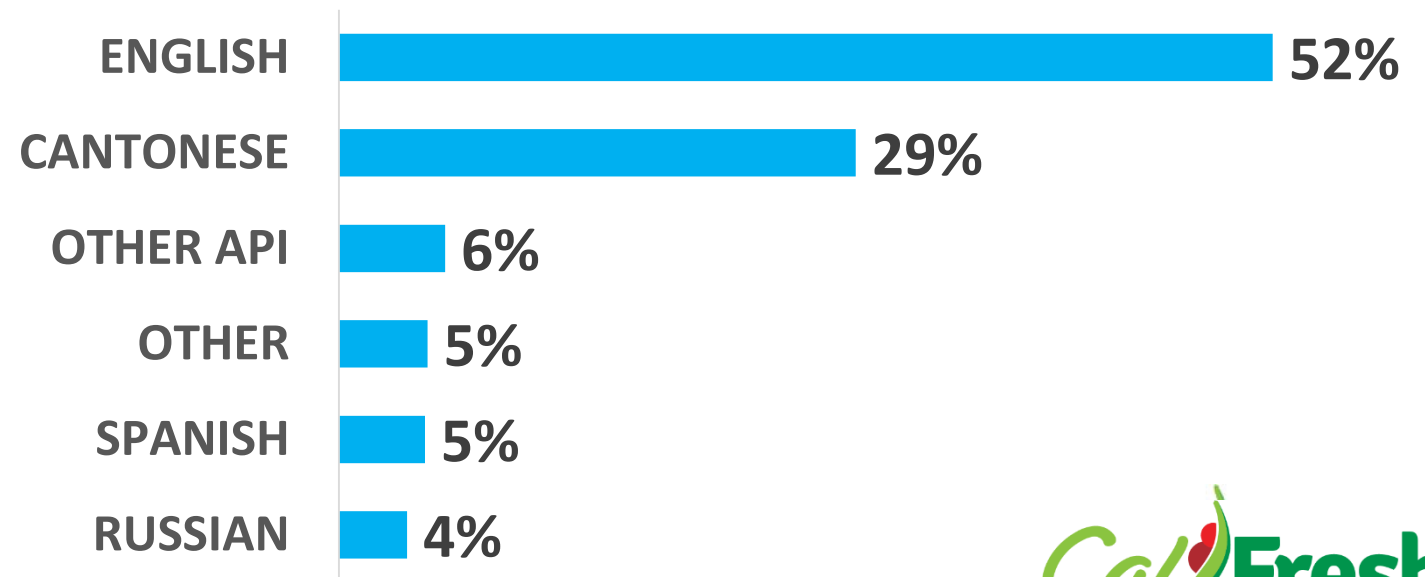
SSI Recipients in San Francisco

40,735

SSI RECIPIENTS

54% FEMALE GENDER AT BIRTH

PRIMARY HOUSEHOLD LANGUAGE



SSI Recipients in San Francisco

ELIGIBILITY TYPE

DISABILITY

50%

AGE

46%

DISABILITY (CHILD)

3%

BLINDNESS

1%

67% OLDER ADULTS 65+

32% YOUNGER ADULTS WITH DISABILITIES

1% CHILDREN WITH DISABILITIES

45%*
CHINESE/
API

27%
WHITE

14%
AFRICAN AMERICAN

10%
LATINO/HISPANIC

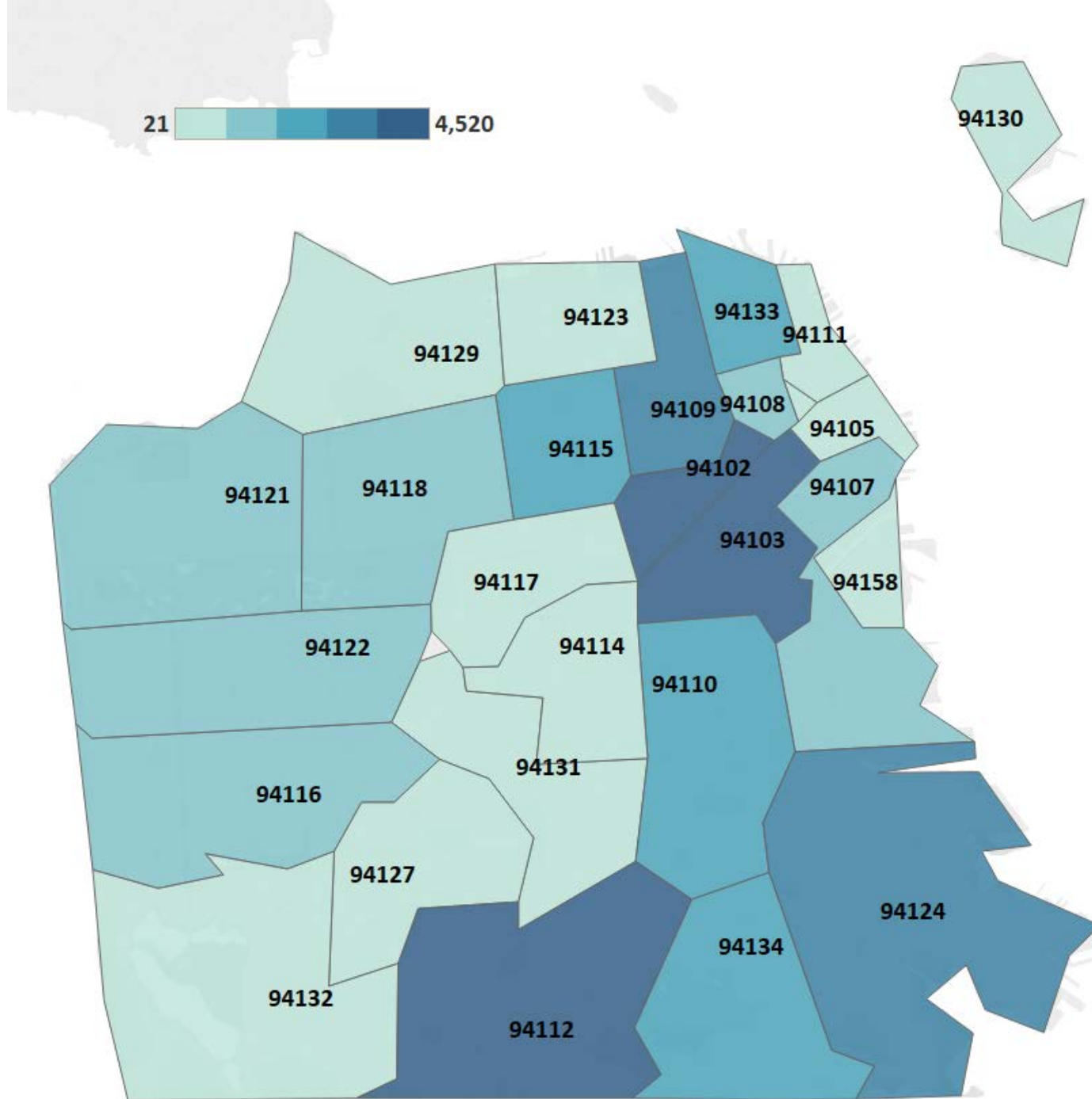
3%
OTHER

**Race/ethnicity data is based on 2016 ACS census estimates. SSI-SDX race/ethnicity data is missing/incomplete.*

SSI Recipients in San Francisco (*N*=40,735)

Zip codes of residence

As of March 2019. | The map includes 39,472 recipients; an additional 1,263 recipients did not list zip codes (*n*=1,079), listed out-of-county zip codes (*n*=81), or listed General Delivery zip codes (*n*=102).





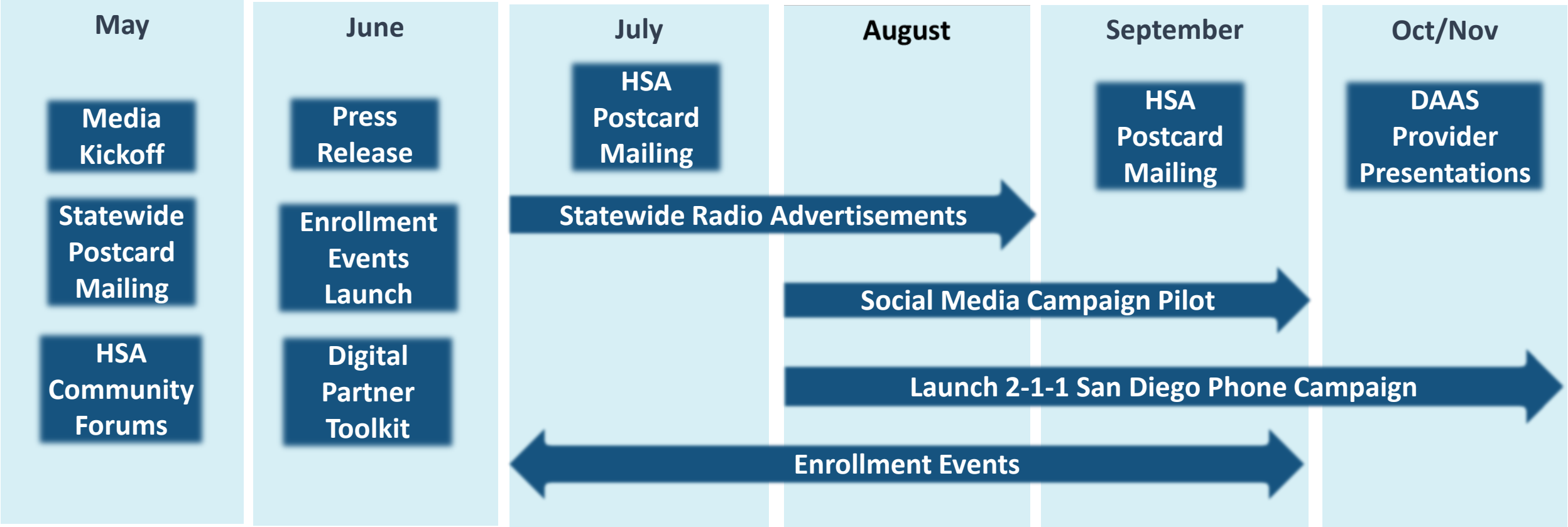
Existing CalFresh Households with SSI Recipients

- No immediate action required
- SSI recipient added to CalFresh case at the next required report
- Small chance that household benefits may decrease
- New state-funded benefit will mitigate reduction in CalFresh

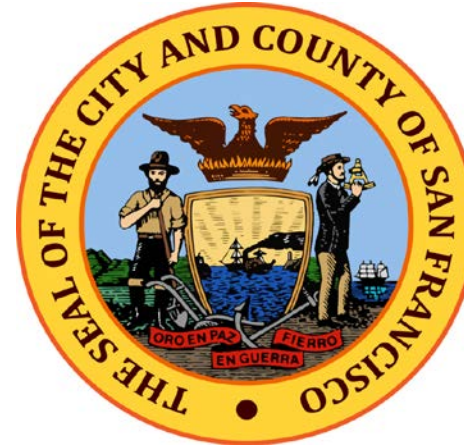




Community Outreach



Outreach Partners



Department of Aging and Adult Services
Area Agencies on Aging
Homelessness and Supportive Housing



CITY AND COUNTY OF SAN FRANCISCO
HUMAN SERVICES AGENCY



Call to Community Partners

Promote

Spread the word to residents and community organizations

Educate

CBO partner toolkit

Outreach materials

Refer clients to HSA for assistance

Assist

Help prepare expense and income verification

Apply for benefits

GetCalFresh.org

Schedule an enrollment event



Partner Toolkit

EXPANDING CALFRESH TO SSI RECIPIENTS

Toolkit for Community Organizations Serving Older People and Adults with Disabilities

May 2019

San Francisco Human Services Agency

Conversation Starters

TIPS AND IDEAS FOR DISCUSSING CALFRESH WITH SSI/SSP RECIPIENTS

Exciting Changes to CalFresh

- There is a big change rolling out to Supplemental Security Income (SSI) and State Supplementary Payment (SSP) recipients this summer. Starting in June, SSI/SSP recipients will now be eligible to receive CalFresh benefits.
- Now more than one million additional Californians are eligible for CalFresh. If you're newly eligible, don't miss out on this benefit that will help you get the food you need. There are enough benefits for every eligible resident.

What to Tell SSI Recipients

- Living in San Francisco can be expensive. CalFresh is a program that can boost your budget and make it easier to buy healthy food.
- You can now apply for CalFresh benefits, which are benefits you can spend at your local grocery store, neighborhood market, or farmers markets throughout San Francisco.
- You can also use your CalFresh benefits to purchase hot meals from restaurants throughout San Francisco and double your money to buy food at farmers markets.
- It's hard to say how much you might actually receive each month, but SSI/SSP recipients could receive anywhere from \$15-\$192 each month. The amount you receive is based on several factors, including your household size and current income.
- Your benefits roll over month-to-month and can be saved up for large purchases or special occasions, like a holiday!
- Your SSI/SSP benefits **will not** be affected by your CalFresh benefits. In fact, you can include any current medical or other expenses, like rent and utilities, in your application. This might result in additional CalFresh benefits for you.
- Most SSI/SSP recipients will only need to reapply for CalFresh once every three years, which makes maintaining your CalFresh benefits easy.
- If you're a current SSI/SSP recipient and you live with someone who receives CalFresh, you don't need to take any action at this time. You will be added to their CalFresh household on the next required report.

What to Tell Current CalFresh Recipients

- If you don't live with any SSI/SSP recipients, your benefits **will not** change. You don't need to take any action at this time. Just keep using your CalFresh benefits to find healthy food!
- If you've already told us about the SSI/SSP recipient in your household, you don't need to take any action at this time. When it is time to reapply, the San Francisco Human Services Agency (HSA) will update your application to include the SSI/SSP recipient in your CalFresh household.

CONVERSATION STARTERS | CALFRESH EXPANSION TOOLKIT | 7

Buying healthy food just got a whole lot easier!

Do you get SSI/SSP?
Good news:
you can now apply for CalFresh!

"CalFresh lets me choose what I want to eat. Sometimes I get a taste for something and I can go to the closest store and buy it."

- San Francisco resident

- Grocery stores
- Neighborhood markets
- Farmers markets
- Participating restaurants

You could receive \$15-\$192 each month to buy healthy food at:

Participation in CalFresh **will not** change your SSI/SSP benefits!

Click, call, or come in to get started!

 VISIT
GetCalFresh.org

 CALL
(415) 558-4700

 COME IN
San Francisco Human Services Agency: 1235 Mission Street, 1440 Harrison Street, or 2 Gough Street



CITY AND COUNTY OF SAN FRANCISCO
HUMAN SERVICES AGENCY





Ways to Apply

Click



GetCalFresh.org

Apply online in 10 minutes

Call



(415) 558-4700

Start your application by phone

Come in



HSA Centers

or

Community locations



CITY AND COUNTY OF SAN FRANCISCO
HUMAN SERVICES AGENCY





Community Assistance

Application Network

- Partnership with San Francisco-Marin Food Bank
- More than 20 community locations:
 - Chinese Newcomers Services
 - Mission Economic Development Agency
 - Mercy Housing
 - Glide
 - St. Anthony's
 - Institute on Aging
 - Self Help for the Elderly

Outstations

- HSA Eligibility Workers on location
- 10 community locations, including:
 - General Hospital
 - Cameron House
 - St. Vincent De Paul Society
 - Episcopal Community Services
 - Navigation Centers
- Expanding to additional locations that serve the SSI population





HSA Implementation

- Increased state allocation starting in FY 18-19
- 33 new positions authorized by the Mayor and Board
- Training, business process changes, automation changes, enhanced outreach efforts
- 16% of SSI recipients applied in first 3 weeks!





Thank You



CITY AND COUNTY OF SAN FRANCISCO
HUMAN SERVICES AGENCY

