

In Home Supportive Services

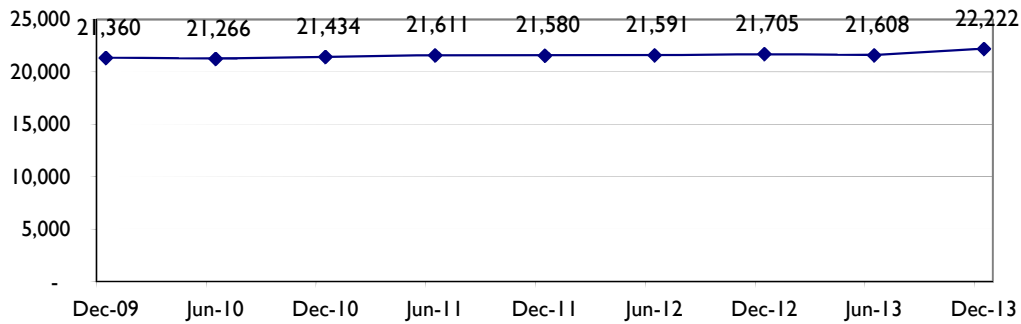
Six-Month Update

July - December 2013

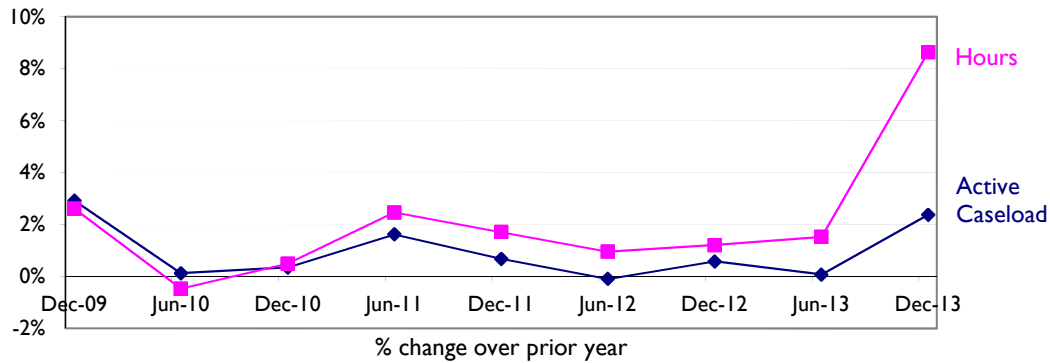
Produced by the San Francisco Human Services Agency Planning Unit

In Home Supportive Services Six-Month Update

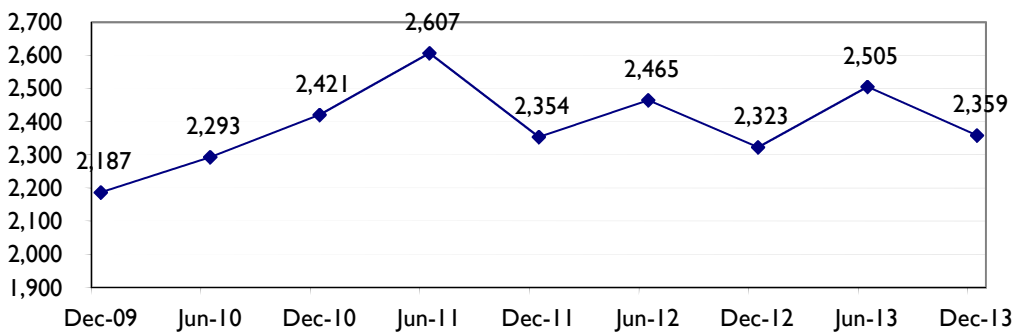
Active Caseload Shows Moderate Increase



Active Caseload & Hours Growth Over Prior Year : Both Increasing, Hours Increase Rapidly

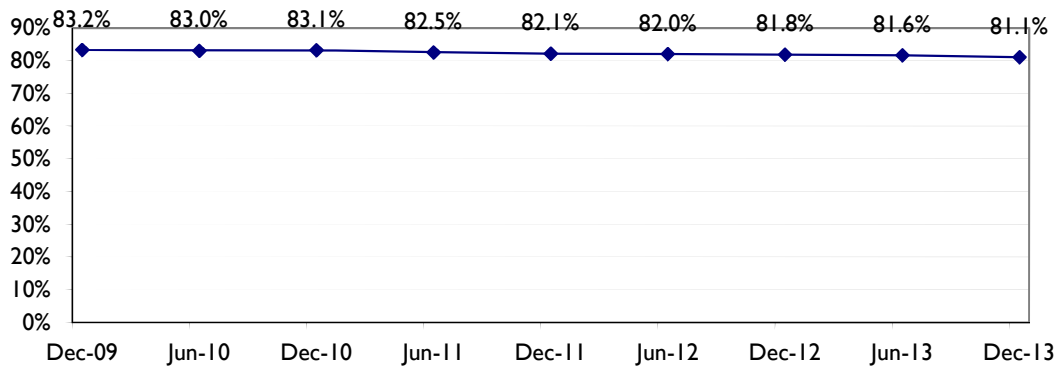


Total New Applications in Prior Six Months Fairly Flat Near 2,350

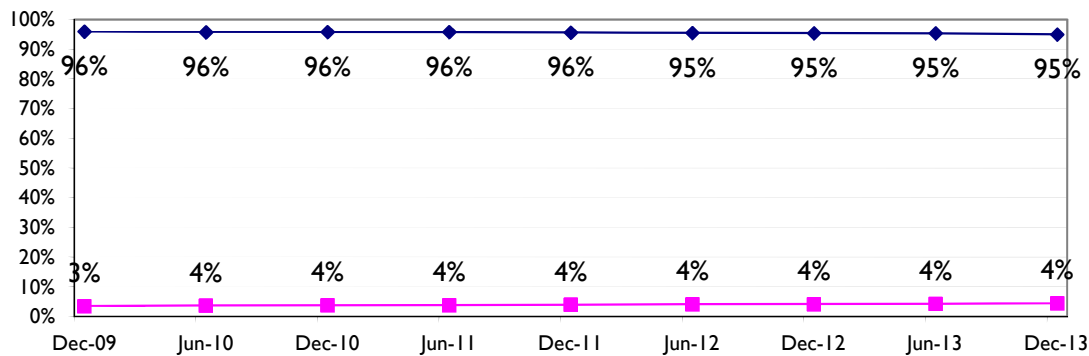


In Home Supportive Services Six-Month Update

Percent of Active Caseload on SSI Dropping Very Slightly



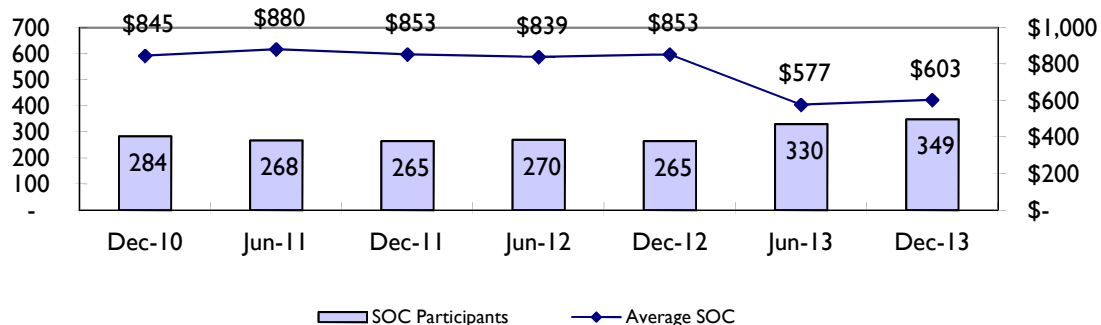
IP Mode and Contract Mode Steady at 95% and 4%



Mixed mode percentage not shown because percentage is so small.

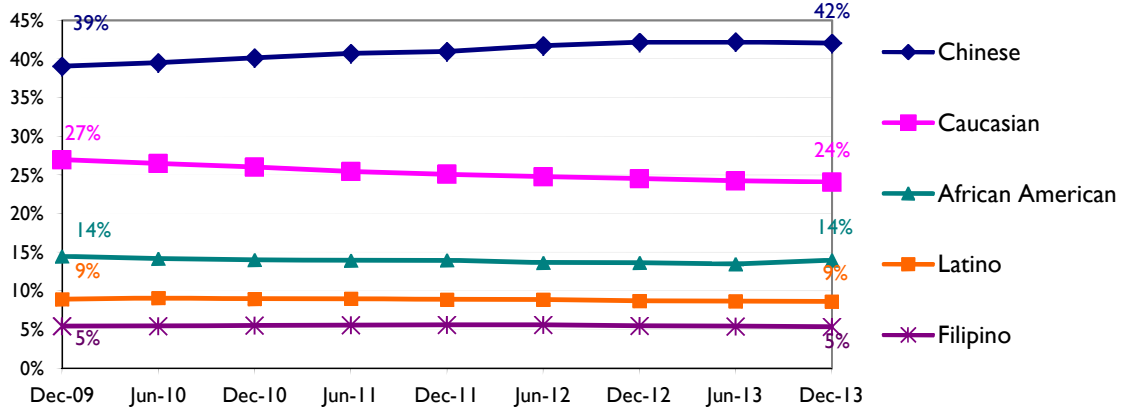
—◆— Independent Provider —■— Contract

Number of Share of Cost Participants and Average Monthly Share of Cost Increasing Compared to Prior Six Months

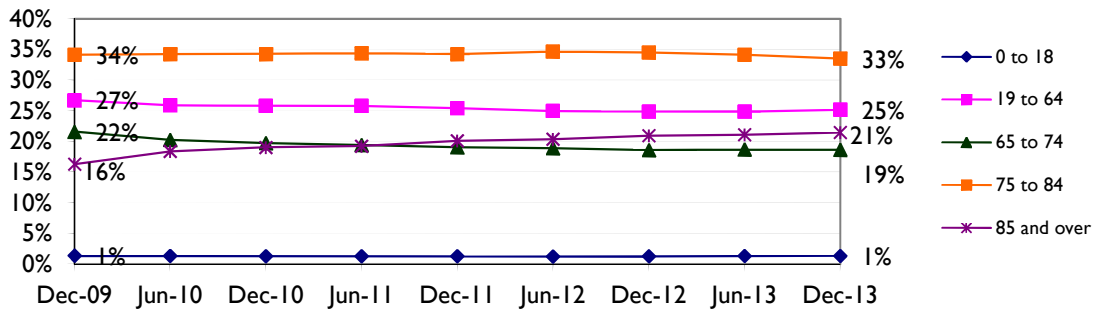


In Home Supportive Services Six-Month Update

Caseload Ethnicity Profile Remains Fairly Stable Compared to Prior Six Months

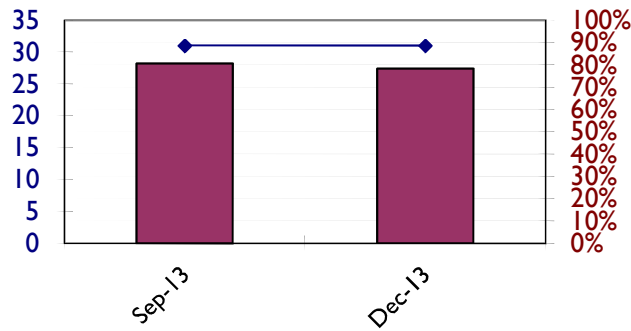


Age Distribution Remains Mostly Stable: Age 85+ Caseload Increasing Since December 2009



In Home Supportive Services Six-Month Update

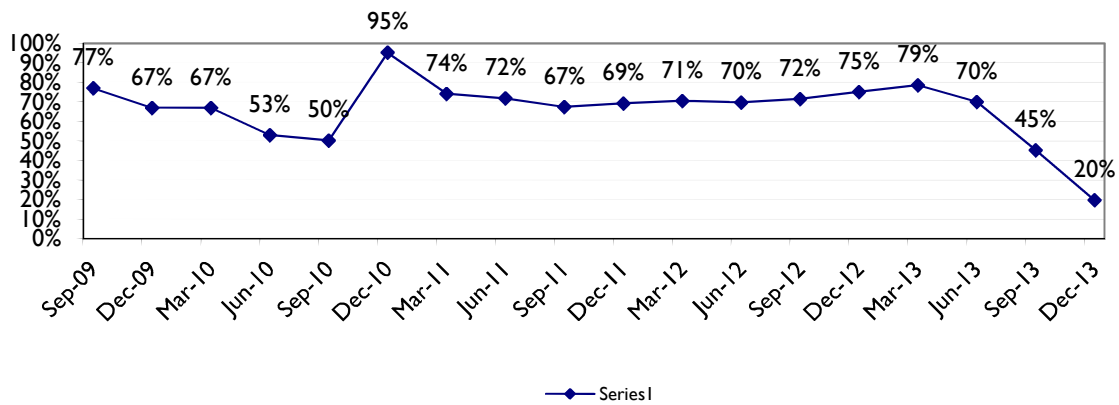
Application Processing Performance is Strong



■ % of applications processed w/in mandated timeframe (target = 100%).

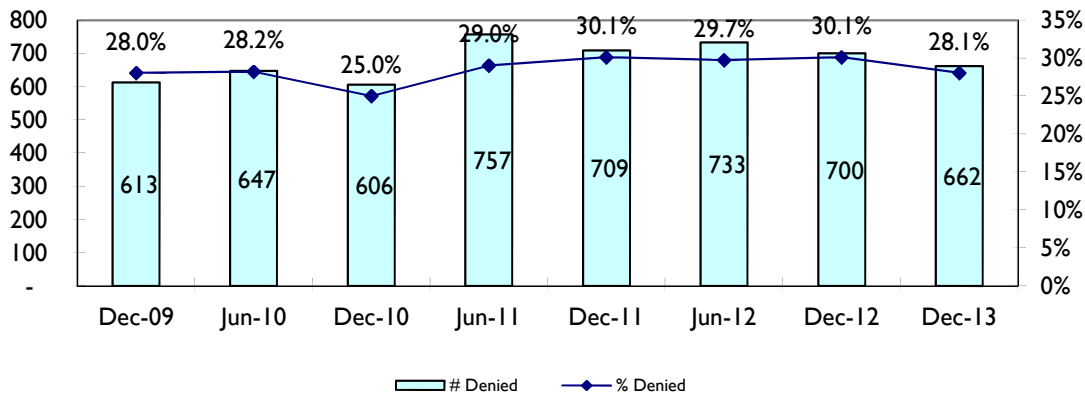
◆ Avg # of days from home visit to determination of eligibility (target = 45)

Percentage of Assessments Completed On Time Drop Dramatically Due to CMIPS II Conversion and Large Number of Staff Vacancies

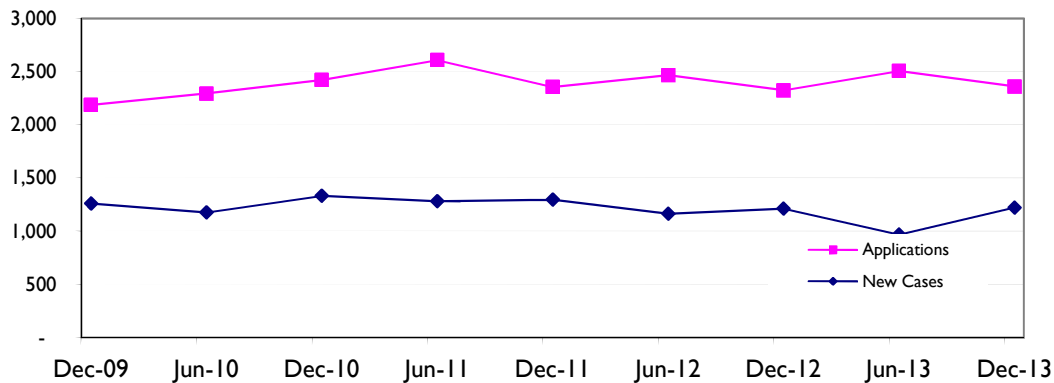


In Home Supportive Services Six-Month Update

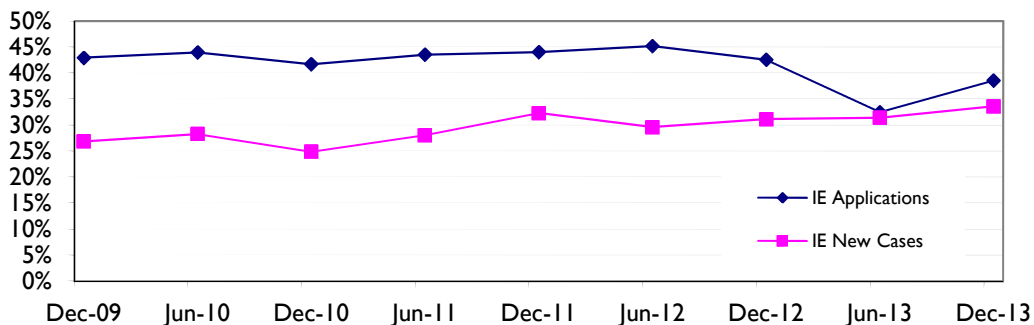
Percentage of Applicants Denied Stable Close to 30% (Chart excludes June 2013 figures due to data reliability concerns)



Applications Remain Steady Near 2,500
New Cases Return to 1,200 Level



% of Applications and New Cases that were Income Eligible: IE
Applicants Returning to Pre-CMIPS II Transition Level



Income Eligible Applicants are those who do not receive SSI.

In Home Supportive Services Six-Month Update

Active Caseload*	Dec-13		Jun-13		Dec-12		Jun-12		Dec-11	
	#	%	#	%	#	%	#	%	#	%
Active Cases	22,222		21,608		21,705		21,591		21,580	
Change from Previous 6 Months	614	2.8%	-97	-0.4%	114	0.5%	11	0.1%	-31	-0.1%
Change from Previous Year	517	2.4%	17	0.1%	125	0.6%	(20)	-0.1%	146	0.7%
Change from 2 Years	642	3.0%	(3)	0.0%	271	1.3%	325	1.5%	220	1.0%
Change from 3 Years	788	3.7%	342	1.6%	345	1.6%	351	1.7%	826	4.0%
Gender										
Male	8,464	38.1%	8,182	37.9%	8,209	37.8%	8,127	37.6%	8,180	37.9%
Female	13,758	61.9%	13,426	62.1%	13,496	62.2%	13,464	62.4%	13,400	62.1%
Delivery Mode										
Independent Provider	21,107	95.0%	20,602	95.3%	20,712	95.4%	20,612	95.5%	20,643	95.7%
Contract	983	4.4%	907	4.2%	893	4.1%	879	4.1%	849	3.9%
Mixed	108	0.5%	99	0.5%	100	0.5%	100	0.5%	88	0.4%
Age (in years)										
0 thru 18	292	1.3%	279	1.3%	265	1.2%	254	1.2%	265	1.2%
19 thru 64	5,588	25.1%	5,365	24.8%	5,391	24.8%	5,387	25.0%	5,484	25.4%
65 thru 74	4,139	18.6%	4,033	18.7%	4,029	18.6%	4,077	18.9%	4,112	19.1%
75 thru 84	7,440	33.5%	7,378	34.1%	7,484	34.5%	7,483	34.7%	7,385	34.2%
85 and over	4,763	21.4%	4,553	21.1%	4,536	20.9%	4,390	20.3%	4,334	20.1%
Average	73		73		73		73		72	
Median	77		77		77		77		76	
Lives Alone	8,836	39.8%	8,483	39.3%	8,853	40.8%	8,828	40.9%	8,787	40.7%
SSI Status										
SSI	18,011	81.1%	17,641	81.6%	17,762	81.8%	17,698	82.0%	17,709	82.1%
Non-SSI	4,211	18.9%	3,967	18.4%	3,943	18.2%	3,893	18.0%	3,871	17.9%
Share of Cost										
Number of Individuals	349	1.6%	330	1.5%	265	1.2%	270	1.3%	265	1.2%
Mean Share of Cost/Individual	\$ 603.36		\$ 577.49		\$ 852.50		\$ 838.99		\$ 852.50	
Median Share of Cost/Individual	\$ 649.00		\$ 650.00		\$ 747.00		\$ 721.50		\$ 747.00	

*Active Caseload is based on a snapshot of the IHSS caseload at the end of the final month of the six-month period.

In Home Supportive Services Six-Month Update

Active Caseload	Dec-13		Jun-13		Dec-12		Jun-12		Dec-11	
	#	%	#	%	#	%	#	%	#	%
Ethnicity										
Chinese	9,341	42.0%	9,123	42.2%	9,150	42.2%	9,004	41.7%	8,844	41.0%
Caucasian	5,349	24.1%	5,240	24.3%	5,325	24.5%	5,348	24.8%	5,416	25.1%
African American	3,108	14.0%	2,916	13.5%	2,960	13.6%	2,947	13.6%	3,019	14.0%
Latino	1,921	8.6%	1,876	8.7%	1,892	8.7%	1,918	8.9%	1,922	8.9%
Filipino	1,198	5.4%	1,175	5.4%	1,197	5.5%	1,215	5.6%	1,211	5.6%
Vietnamese	435	2.0%	414	1.9%	424	2.0%	413	1.9%	414	1.9%
Korean	255	1.1%	254	1.2%	257	1.2%	255	1.2%	255	1.2%
Cambodian	47	0.2%	44	0.2%	45	0.2%	46	0.2%	47	0.2%
Other/Unknown	568	2.6%	566	2.6%	455	2.1%	445	2.1%	452	2.1%
Primary Language										
English	6,351	28.6%	5,998	27.8%	6,058	27.9%	5,977	27.7%	6,128	28.4%
Cantonese	8,117	36.5%	7,873	36.4%	7,859	36.2%	7,735	35.8%	7,590	35.2%
Russian	3,157	14.2%	3,174	14.7%	3,243	14.9%	3,333	15.4%	3,368	15.6%
Spanish	1,526	6.9%	1,500	6.9%	1,509	7.0%	1,544	7.2%	1,529	7.1%
Mandarin	828	3.7%	791	3.7%	780	3.6%	767	3.6%	752	3.5%
Tagalog	946	4.3%	927	4.3%	934	4.3%	962	4.5%	931	4.3%
Vietnamese	402	1.8%	382	1.8%	393	1.8%	381	1.8%	377	1.7%
All Other	895	4.0%	937	4.3%	929	4.3%	892	4.1%	905	4.2%
Zip Code/Neighborhood										
94102 Hayes Valley/Tenderloin/N. of Market	2,220	10.0%	2,083	9.6%	2,000	9.2%	1,990	9.2%	1,963	9.1%
94103 South of Market	1,870	8.4%	1,820	8.4%	1,785	8.2%	1,825	8.5%	1,824	8.5%
94107 Potrero Hill	711	3.2%	693	3.2%	708	3.3%	713	3.3%	721	3.3%
94108 Chinatown	883	4.0%	866	4.0%	882	4.1%	873	4.0%	880	4.1%
94109 Polk/Russian Hill	1,693	7.6%	1,639	7.6%	1,662	7.7%	1,653	7.7%	1,636	7.6%
94110 Inner Mission/Bernal Heights	1,347	6.1%	1,301	6.0%	1,318	6.1%	1,322	6.1%	1,320	6.1%
94112 Ingleside/Excelsior/Outer Mission	1,783	8.0%	1,736	8.0%	1,758	8.1%	1,720	8.0%	1,706	7.9%
94115 Western Addition/Japantown	1,595	7.2%	1,556	7.2%	1,586	7.3%	1,600	7.4%	1,600	7.4%
94116 Parkside	853	3.8%	843	3.9%	844	3.9%	842	3.9%	831	3.9%
94118 Inner Richmond	718	3.2%	696	3.2%	718	3.3%	705	3.3%	693	3.2%
94121 Outer Richmond	1,089	4.9%	1,072	5.0%	1,112	5.1%	1,117	5.2%	1,147	5.3%
94122 Sunset	986	4.4%	980	4.5%	1,004	4.6%	997	4.6%	1,003	4.6%
94124 Bayview/Hunters Point	1,442	6.5%	1,362	6.3%	1,372	6.3%	1,343	6.2%	1,374	6.4%
94132 Lake Merced/Stonestown	568	2.6%	547	2.5%	544	2.5%	543	2.5%	554	2.6%
94133 North Beach/Chinatown	1,574	7.1%	1,553	7.2%	1,568	7.2%	1,571	7.3%	1,562	7.2%
94134 Visitacion Valley/Sunnydale	1,403	6.3%	1,377	6.4%	1,385	6.4%	1,345	6.2%	1,320	6.1%
Others	1,487	6.7%	1,484	6.9%	1,459	6.7%	1,432	6.6%	1,446	6.7%

In Home Supportive Services Six-Month Update

New Applications**	Dec-13		Jun-13		Dec-12		Jun-12		Dec-11	
	#	%	#	%	#	%	#	%	#	%
Total New Applications	2,359		2,505		2,323		2,465		2,354	
Change from previous six months	-146	-5.8%	182	7.8%	-142	-5.8%	111	4.7%	-253	-9.7%
Change from previous year	36	1.5%	40	1.6%	-31	-1.3%	-142	-5.4%	-67	-2.8%
Application Status										
Record	560	23.7%	1,322	52.8%	512	22.0%	638	25.9%	702	29.8%
Eligible	1,036	43.9%	806	32.2%	1,025	44.1%	1,000	40.6%	870	37.0%
Interim	-	0.0%	-	0.0%	4	0.2%	5	0.2%	3	0.1%
Leave	11	0.5%	8	0.3%	8	0.3%	7	0.3%	9	0.4%
Terminated	90	3.8%	69	2.8%	74	3.2%	82	3.3%	61	2.6%
Denied (reasons below):	662	28.1%	300	12.0%	700	30.1%	733	29.7%	709	30.1%
Recipient Request					263	37.6%	325	44.3%	273	38.5%
Residence					85	12.1%	70	9.5%	63	8.9%
Income, Resources/Other Eligibility Factors					303	43.3%	272	37.1%	291	41.0%
SSI/SSP Personal & Real Property (excess)					11	1.6%	15	2.0%	16	2.3%
Other Reason					38	5.4%	51	7.0%	66	9.3%
SSI Status**										
SSI	1,291	54.7%	1,641	65.5%	1,335	57.5%	1,351	54.8%	1,318	56.0%
Non-SSI	910	38.6%	814	32.5%	988	42.5%	1,114	45.2%	1,036	44.0%
Unknown	158	6.7%	50	2.0%						
Zip Code/Neighborhood										
94102 Hayes Valley/Tenderloin/N. of Market	351	14.9%	396	15.8%	305	13.1%	303	12.3%	299	12.7%
94103 South of Market	237	10.0%	257	10.3%	251	10.8%	260	10.5%	224	9.5%
94107 Potrero Hill	64	2.7%	53	2.1%	61	2.6%	44	1.8%	61	2.6%
94108 Chinatown	66	2.8%	63	2.5%	72	3.1%	71	2.9%	64	2.7%
94109 Polk/Russian Hill	213	9.0%	211	8.4%	206	8.9%	213	8.6%	189	8.0%
94110 Inner Mission/Bernal Heights	158	6.7%	193	7.7%	179	7.7%	182	7.4%	157	6.7%
94112 Ingleside/Excelsior/Outer Mission	222	9.4%	253	10.1%	188	8.1%	235	9.5%	252	10.7%
94115 Western Addition/Japantown	109	4.6%	99	4.0%	107	4.6%	98	4.0%	105	4.5%
94116 Parkside	83	3.5%	82	3.3%	72	3.1%	88	3.6%	79	3.4%
94117 Haight-Ashbury	41	1.7%	52	2.1%	39	1.7%	50	2.0%	46	2.0%
94118 Inner Richmond	51	2.2%	54	2.2%	37	1.6%	67	2.7%	42	1.8%
94121 Outer Richmond	67	2.8%	70	2.8%	70	3.0%	71	2.9%	66	2.8%
94122 Sunset	92	3.9%	94	3.8%	88	3.8%	92	3.7%	106	4.5%
94124 Bayview/Hunters Point	203	8.6%	186	7.4%	185	8.0%	192	7.8%	219	9.3%
94132 Lake Merced/Stonestown	42	1.8%	56	2.2%	55	2.4%	51	2.1%	62	2.6%
94133 North Beach/Chinatown	105	4.5%	118	4.7%	111	4.8%	135	5.5%	109	4.6%
94134 Visitacion Valley/Sunnydale	126	5.3%	154	6.1%	167	7.2%	167	6.8%	157	6.7%
Others	129	5.5%	114	4.6%	130	5.6%	146	5.9%	117	5.0%

** New Applications include all applications with an application date during the six-month period (e.g., January 1 - June 30). SSI Status analysis added from March 2006 forward.

In Home Supportive Services Six-Month Update

New Cases***	Dec-13		Jun-13		Dec-12		Jun-12		Dec-11	
	#	%	#	%	#	%	#	%	#	%
Total New Cases	1,221		968		1,211		1,162		1,294	
Gender										
Male	577	47.3%	465	48.0%	586	48.4%	518	44.6%	636	49.1%
Female	644	52.7%	503	52.0%	625	51.6%	644	55.4%	658	50.9%
Delivery mode										
Independent Provider	1,089	89.2%	862	89.0%	1,095	90.4%	1,070	92.1%	1,194	92.3%
Contract	131	10.7%	103	10.6%	110	9.1%	91	7.8%	98	7.6%
Mixed	1	0.1%	3	0.3%	6	0.5%	1	0.1%	2	0.2%
Age (in years)										
0 thru 18	22	1.8%	13	1.3%	23	1.9%	15	1.3%	14	1.1%
19 thru 64	460	37.7%	376	38.8%	448	37.0%	390	33.6%	452	34.9%
65 thru 74	308	25.2%	242	25.0%	298	24.6%	314	27.0%	318	24.6%
75 thru 84	317	26.0%	259	26.8%	323	26.7%	343	29.5%	381	29.4%
85 and over	114	9.3%	78	8.1%	119	9.8%	100	8.6%	129	10.0%
Average	67		67		66		68		68	
Median	69		69		69		71		70	
Lives Alone***	522	42.8%	430	44.4%	514	42.4%	487	41.9%	527	40.7%
SSI Status										
SSI	811	66.4%	664	68.6%	834	68.9%	818	70.4%	876	67.7%
Non-SSI	410	33.6%	304	31.4%	377	31.1%	344	29.6%	418	32.3%
Share of Cost										
Number of Individuals	42	3.4%	30	3.1%	16	1.3%	13	1.1%	16	1.2%
Mean Share of Cost/Individual	\$ 698		\$ 441		\$ 862		\$ 1,007		\$ 734	
Median Share of Cost/Individual	\$ 678		\$ 542		\$ 741		\$ 927		\$ 671	
Ethnicity										
Chinese	430	35.2%	364	37.6%	499	41.2%	489	42.1%	525	40.6%
Caucasian	244	20.0%	179	18.5%	237	19.6%	212	18.2%	225	17.4%
African American	217	17.8%	157	16.2%	215	17.8%	195	16.8%	220	17.0%
Latin American/Hispanic	116	9.5%	80	8.3%	114	9.4%	103	8.9%	141	10.9%
Filipino	82	6.7%	59	6.1%	74	6.1%	96	8.3%	95	7.3%
Korean	31	2.5%	11	1.1%	26	2.1%	17	1.5%	27	2.1%
Vietnamese	15	1.2%	6	0.6%	10	0.8%	12	1.0%	24	1.9%
Cambodian	4	0.3%	2	0.2%	36	3.0%	5	0.4%	1	0.1%
Other/Unknown	82	6.7%	110	11.4%	-	0.0%	33	2.8%	36	2.8%

*** New Cases include all cases that currently have eligible or interim status and also have an application data during the six month period that begins one month prior to the report period (e.g., December 1 - May 31 for the January - June report).

In Home Supportive Services Six-Month Update

New Cases*	Dec-13		Jun-13		Dec-12		Jun-12		Dec-11	
	#	%	#	%	#	%	#	%	#	%
Primary Language										
English	503	41.2%	369	38.1%	480	39.6%	403	34.7%	470	36.3%
Cantonese	382	31.3%	333	34.4%	428	35.3%	422	36.3%	459	35.5%
Russian	35	2.9%	23	2.4%	38	3.1%	45	3.9%	42	3.2%
Spanish	95	7.8%	60	6.2%	94	7.8%	95	8.2%	111	8.6%
Mandarin	46	3.8%	31	3.2%	45	3.7%	43	3.7%	58	4.5%
Tagalog	74	6.1%	48	5.0%	56	4.6%	87	7.5%	83	6.4%
Vietnamese	30	2.5%	7	0.7%	25	2.1%	18	1.5%	23	1.8%
All Other	56	4.6%	83	8.6%	45	3.7%	49	4.2%	48	3.7%
Zip Code/Neighborhood										
94102 Hayes Valley/Tenderloin/N. of Market	200	16.4%	162	16.7%	146	12.1%	148	12.7%	163	12.6%
94103 South of Market	113	9.3%	99	10.2%	117	9.7%	105	9.0%	128	9.9%
94107 Potrero Hill	35	2.9%	26	2.7%	24	2.0%	19	1.6%	35	2.7%
94108 Chinatown	42	3.4%	34	3.5%	52	4.3%	43	3.7%	42	3.2%
94109 Polk/Russian Hill	102	8.4%	81	8.4%	94	7.8%	101	8.7%	83	6.4%
94110 Inner Mission/Bernal Heights	73	6.0%	64	6.6%	84	6.9%	89	7.7%	73	5.6%
94112 Ingleside/Excelsior/Outer Mission	104	8.5%	95	9.8%	96	7.9%	118	10.2%	124	9.6%
94115 Western Addition/Japantown	61	5.0%	32	3.3%	53	4.4%	43	3.7%	59	4.6%
94116 Parkside	40	3.3%	34	3.5%	42	3.5%	46	4.0%	43	3.3%
94118 Inner Richmond	28	2.3%	24	2.5%	33	2.7%	28	2.4%	40	3.1%
94121 Outer Richmond	39	3.2%	25	2.6%	40	3.3%	35	3.0%	42	3.2%
94122 Sunset	54	4.4%	42	4.3%	60	5.0%	50	4.3%	60	4.6%
94124 Bayview/Hunters Point	94	7.7%	60	6.2%	95	7.8%	78	6.7%	109	8.4%
94132 Lake Merced/Stonestown	24	2.0%	19	2.0%	28	2.3%	21	1.8%	32	2.5%
94133 North Beach/Chinatown	69	5.7%	58	6.0%	79	6.5%	86	7.4%	85	6.6%
94134 Visitacion Valley/Sunnydale	74	6.1%	65	6.7%	83	6.9%	79	6.8%	105	8.1%
Others	69	5.7%	48	5.0%	85	7.0%	73	6.3%	71	5.5%

In Home Supportive Services Six-Month Update

Services for Active Caseload	Dec-13		Jun-13		Dec-12		Jun-12		Dec-11	
	% of Active Cases	Avg Hrs Authorized (wkly)	% of Active Cases	Avg Hrs Authorized (wkly)	% of Active Cases	Avg Hrs Authorized (wkly)	% of Active Cases	Avg Hrs Authorized (wkly)	% of Active Cases	Avg Hrs Authorized (wkly)
Domestic Services (D&R)	99%	0.8	99%	0.8	99%	0.8	99%	0.8	99%	0.8
Routine Laundry (D&R)	99%	1.6	99%	1.6	99%	1.6	99%	1.6	99%	1.6
Grocery Shopping (D&R)	99%	0.6	98%	0.6	98%	0.6	98%	0.6	99%	0.6
Errands & Other Shopping (D&R)	98%	0.6	97%	0.6	97%	0.6	97%	0.6	97%	0.6
Meal Clean Up (D&R)	98%	2.0	98%	2.0	98%	1.9	98%	1.9	98%	1.9
Preparation of Meals (D&R)	98%	4.6	98%	4.6	98%	4.5	98%	4.5	98%	4.5
Accompaniment to Medical Appointment (D&R)	95%	1.0	94%	0.9	94%	0.9	94%	0.9	94%	0.9
Bathing, Oral Hygiene, Grooming	89%	2.5	88%	2.4	88%	2.4	88%	2.4	88%	2.4
Dressing	75%	1.6	73%	1.6	73%	1.5	73%	1.5	72%	1.5
Prosthesis Assistance	75%	0.9	73%	0.9	73%	0.9	72%	0.9	72%	0.9
Ambulation	68%	2.0	66%	1.9	65%	1.9	65%	1.9	64%	1.9
Moving In/Out of Bed	56%	1.4	54%	1.4	53%	1.4	53%	1.4	53%	1.4
Bowel & Bladder Care	52%	2.6	49%	2.6	49%	2.5	48%	2.5	47%	2.5
Repositioning/Rubbing	48%	1.9	47%	1.8	47%	1.8	47%	1.8	46%	1.8
Feeding	27%	2.8	25%	2.8	24%	2.8	24%	2.8	24%	2.8
Routine Bed Baths	10%	1.8	9%	1.7	9%	1.8	9%	1.8	9%	1.7
Paramedical Services	6%	4.0	6%	3.8	6%	3.9	6%	3.8	5%	3.8
Respiration	4%	1.2	4%	1.2	4%	1.1	4%	1.2	4%	1.2
Protective Supervision	2%	36.3	2%	35.6	2%	35.9	2%	35.4	2%	35.2
Menstrual Care	2%	0.6	2%	0.6	2%	0.6	2%	0.6	2%	0.6
Accompaniment to Alternative Resources (D&R)	1%	2.3	1%	2.2	1%	2.3	1%	2.3	1%	2.1
Heavy Cleaning	0%	14.0	0%	13.8	0%	22.3	0%	12.5	0%	23.9
Total Weekly Authorized Hours	484,033		449,126		445,550		442,388		440,252	
Average Weekly Hours per Recipient	21.8		20.8		20.5		20.5		20.4	
Total Weekly Auth Domestic & Related Hours	248,042		234,665		233,818		232,483		232,487	53%
Average Monthly Cost/Case - SF	unavailable due to CMIPS II implementation							\$ 1,090.67		\$ 1,036.86
Average Monthly Cost/Case - CA	unavailable due to CMIPS II implementation							\$ 932.16		\$ 910.99

D&R = Domestic & Related services

In Home Supportive Services Six-Month Update

Independent Providers	Dec-13		Jun-13		Dec-12		Jun-12		Dec-11	
	#	%	#	%	#	%	#	%	#	%
Total Providers with an Active Consumer	19,937		18,593		18,374		18,181		18,193	
Change from previous six months	1,344	6.7%	219	1.2%	193	1.1%	-12	-0.1%	262	1.4%
Change from previous year	1,563	7.8%	412	2.2%	181	1.0%	250	1.4%	490	2.7%
Newly Enrolled Providers	1,589		2,007		1,925		1,925		1,631	
Providers with at least one relative consumer	12,251	61.4%	12,289	66.1%	11,707	63.7%	11,660	64.1%	11,654	64.1%
Providers serving more than one consumer	3,862	19.4%	3,378	18.2%	3,495	19.0%	3,518	19.3%	3,527	19.4%
Relationship to Consumer (providers may have more than one consumer)										
Relative - Spouse	506	2.5%	512	2.8%	496	2.7%	507	2.8%	503	2.8%
Relative - Parent	828	4.2%	766	4.1%	757	4.1%	739	4.1%	723	4.0%
Relative - Child	7,336	36.8%	7,010	37.7%	7,004	38.1%	6,905	38.0%	6,870	37.8%
Relative - Other	3,920	19.7%	3,757	20.2%	3,788	20.6%	3,831	21.1%	3,908	21.5%
Non-Relative - Friend	1,718	8.6%	1,577	8.5%	1,630	8.9%	1,678	9.2%	1,784	9.8%
Non-Relative - Neighbor	53	0.3%	41	0.2%	44	0.2%	54	0.3%	53	0.3%
Non-Relative - Landlord	1	0.0%	2	0.0%	4	0.0%	4	0.0%	6	0.0%
Non-Relative - Housemate	34	0.2%	34	0.2%	34	0.2%	33	0.2%	36	0.2%
Non-Relative - Live-in Provider	25	0.1%	28	0.2%	27	0.1%	27	0.1%	25	0.1%
Non-Relative - Home Health Agency	0	34.7%	0	32.5%	2	0.0%	2	0.0%	2	0.0%
Non-Relative - Other Business	0	0.0%	0	0.0%	12	0.1%	14	0.1%	14	0.1%
Non-Relative - Other	6,928	34.7%	6,045	32.5%	5,918	32.2%	5,741	31.6%	5,660	31.1%
Ethnicity (providers with more than one consumer may have list more than one ethnicity)										
Chinese	7,284	37%	7,398	40%	7,617	41%	7,492	41%	7,384	41%
Caucasian	3,399	17%	3,406	18%	3,557	19%	3,618	20%	3,740	21%
African American	1,348	7%	1,222	7%	1,387	8%	1,417	8%	1,524	8%
Latino	1,354	7%	1,398	8%	1,490	8%	1,474	8%	1,519	8%
Filipino	803	4%	821	4%	885	5%	876	5%	873	5%
Vietnamese	338	2%	346	2%	364	2%	364	2%	376	2%
Korean	138	1%	141	1%	149	1%	146	1%	146	1%
Cambodian	18	0%	19	0%	20	0%	19	0%	22	0%
Other/Unknown	5,255	26%	3,842	21%	3,899	21%	3,776	21%	3,562	20%